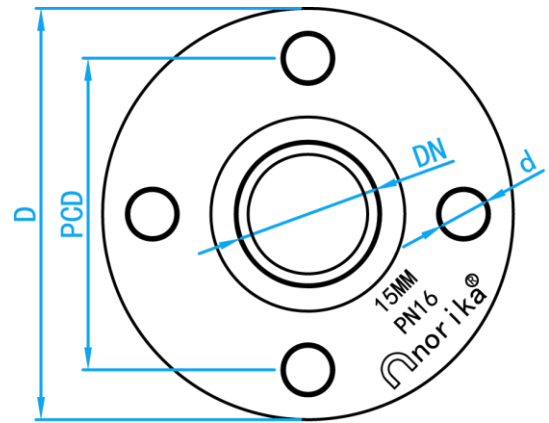
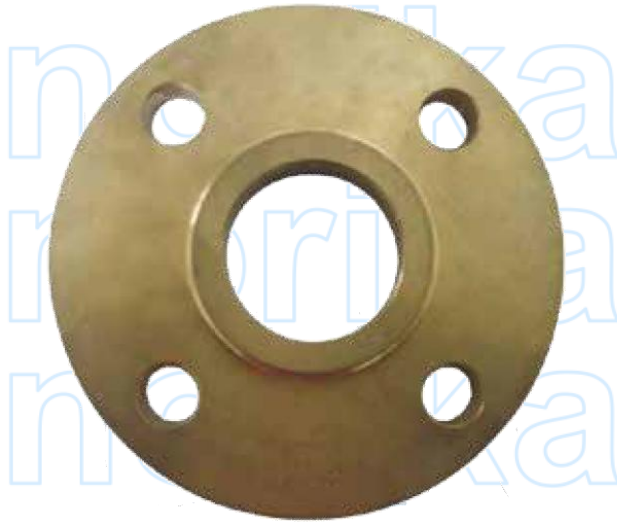


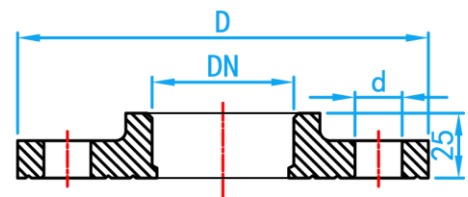
BRONZE SORF (SLIP-ON RAISED FACE) FLANGE PN16



COMPLY WITH BS 4504 PN16



TOP VIEW



CROSS SECTIONAL VIEW

COMPONENT PARTS

PARTS	MATERIAL
Flange	Bronze

DIMENSIONS

SKU	SIZE (mm)	D [mm]	DN (mm)	PCD (mm)	NOs OF HOLES	d [mm]	WEIGHT (kg)
BFPN16MBL015015	15	95	15	65	4	14	0.8
BFPN16MBL020020	20	105	22	75	4	14	1.0
BFPN16MBL025025	25	115	28	85	4	14	1.2
BFPN16MBL035035	35	140	35	100	4	18	1.8
BFPN16MBL042042	42	150	42	110	4	18	2.1
BFPN16MBL050050	54	165	54	125	4	18	2.4
BFPN16MBL065065	65	185	67	145	4	18	3.0
BFPN16MBL080080	80	200	76	160	8	18	3.4
BFPN16MBL10050	100X54	220	54	180	8	18	4.6
BFPN16MBL10065	100X65	220	67	180	8	18	4.3
BFPN16MBL10080	100X80	220	76	180	8	18	4.0
BFPN16MBL100100	100	220	108	180	8	18	3.7
BFPN16MBL150150	150	285	159	240	8	22	5.5